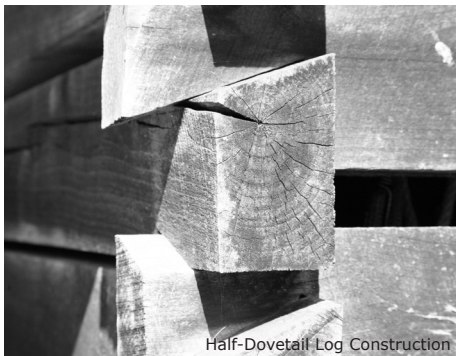


The Long Hunter cabin is intended as a modern interpretation of a 'TRUE' (Appalachian-Style) log cabin. Inspired by tradition, the Long Hunter cabin draws inspiration from the vernacular building styles and techniques popularized throughout our pioneering past, and seeks to combine the modern amenities our clients expect with the texture and craftsmanship typically found only in older structures.



Drawing from the emerging 'micro-house' movement, the Long Hunter cabin packs a lot of shelter in a very compact package - allowing for greater energy efficiency over the life of the structure, and reducing the impact of conventional construction on the surrounding environment.

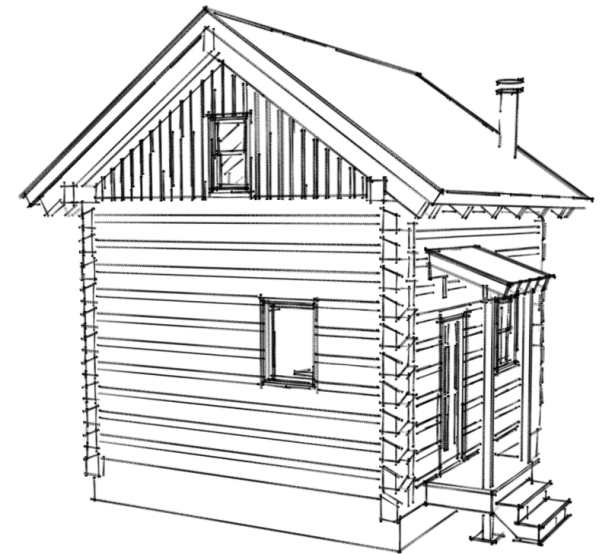
Unlike many of our competitor's kits, Mountain Works' Long Hunter cabin kit is entirely handcrafted, and hand-cut.

- All material is sourced locally from timber selectively harvested in a sustainable manner by trained woodsmen.
- We cut and mill the timbers ourselves, hand-cutting each joint - ensuring uniform character and quality with each log, and providing a texture that cannot be reproduced in the machine-milled log-home kits provided by many of our competitors.

Material acquisition and preparation is a big part of what we do.

- All timber we harvest is pulled out of the forest using the power of draft animals.
- We do not employ heavy machinery at any point during the process. This helps us to greatly reduce our overall environmental impact.

Ian and 'the boys' pulling a newly-cut log out of the forest



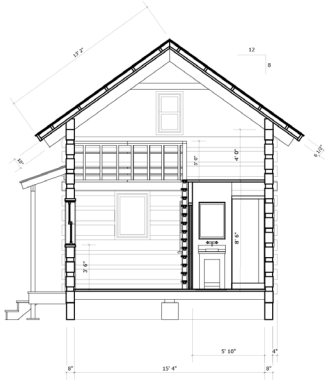
'Long Hunter' Sketch Perspective

The 'Long Hunter' Cabin

- approx. 440 total sq. ft.
- includes full kitchen and full bath
- sleeping loft (above)
- flexible living area (can double as second sleeping area)

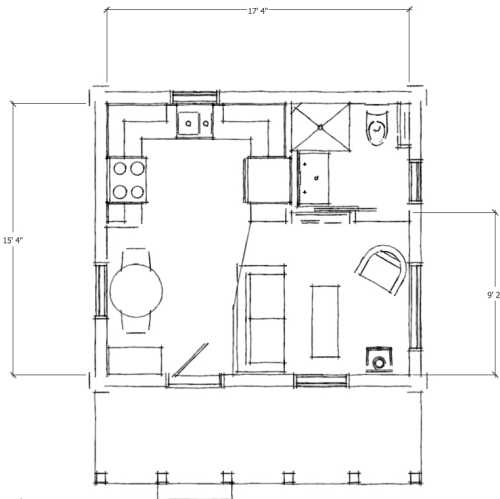
Thermal comfort is ensured through a combination of solid-wood walls, insulated chinking (between log courses) and high-efficiency windows and doors. The building is heated in winter with the aid of a small wood stove and cooled in summer through the utilization of natural ventilation. Careful attention has been paid to providing adequate overhangs which serve to protect and help cool the building's facades in summer, but still allow the winter sun in to help passively heat the cabin. Highly efficient appliances are used throughout and a tankless hot-water heater takes the place of a less-efficient model.

Building Section



The Long Hunter cabin is designed to address all modern requirements as it relates to code compliance and structural integrity, ensuring that the structure is sound, and that your purchase is a safe and reliable structure that will serve you and your family's needs for many years to come.

- The building strictly adheres to International Building Code and meets all North Carolina building code for privately-owned single-family structures.
- We do not employ heavy machinery at any point during the process. This helps us to greatly reduce our overall environmental impact.



Floor Plan

Pricing for the Long Hunter cabin kit is competitive with log home kits of similar square footage already on the market today. However, a Mountain Works cabin kit carries the added value of the Mountain Works brand of sustainable material sourcing and fabrication. Unlike our competitors, many of which utilize highly-expensive, energy intensive milling and CNC-machined joinery processes, our kit includes all hand-cut joinery in a traditional built-form carrying substantially less embodied energy, providing a traditional aesthetic unmatched in the industry today.

Pricing :

Complete Structural Frame System:
(fully notched - incl. all structural members)
- starting at \$9,750.00

Includes:

- Log Pen w/ cut door & window openings
- Floor Joists
- Rafters
- Ridge Beam
- Crush Blocks & All Hardware

Please feel free to contact Mountain Works directly for 'Full Build-Out' pricing and/or custom 'One-Off' design/build solutions.

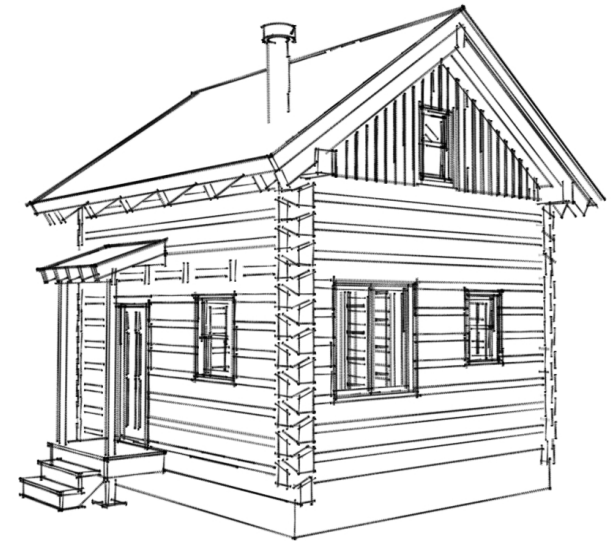
Contact: Ian Snider, owner/co-founder

Email: mtnworks@gmail.com

Website: <http://www.mtnworks.org/>

The Long Hunter

- a Mountain Works Log Cabin Mini-Home Kit



'Long Hunter' Sketch Perspective

Introducing a new micro-house for the traditional log-cabin enthusiast. The 'Long Hunter' is designed as a TRUE, hand-crafted log cabin kit YOU can assemble yourself -or- have Mountain Works' crew construct for you on a site of your choosing.

